

SubConn® Micro Circular

21 contacts

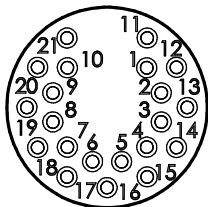
Connector specifications

Voltage rating	300 V DC/AC rms
Current rating	5 A per contact (max 40 A per connector)
Insulation resistance	> 200 MΩ
Contact resistance	< 0.01 Ω
Wet matings	> 500
Temperature rating (water)	- 4 to 60°C, 25 to 140°F
Temperature rating (air)	- 40 to 60°C, - 40 to 140°F
Storage temperature rating	- 40 to 60°C, - 40 to 140°F
Qualified pressure tested	1,400 bar, 20,300 psi (mated) 800 bar, 11,600 psi (open face)
Depth rating PEEK	300 bar, 4,350 psi

Material specifications

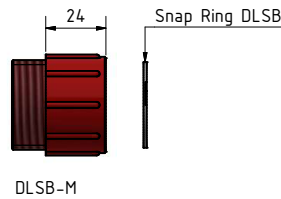
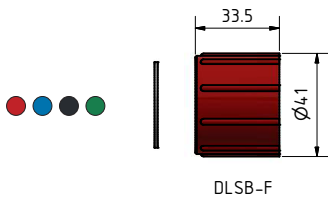
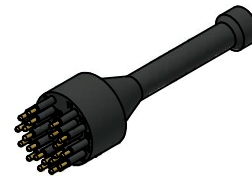
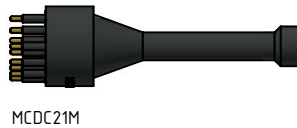
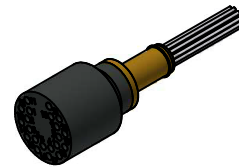
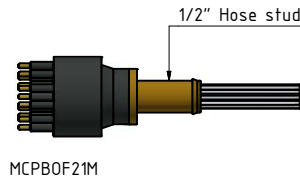
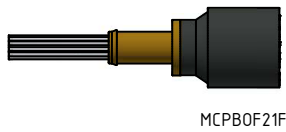
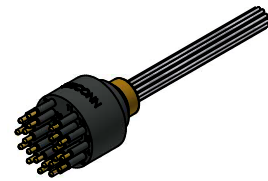
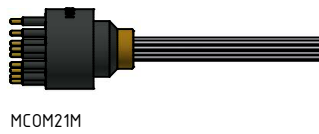
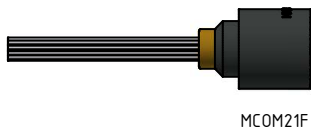
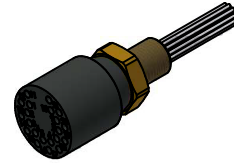
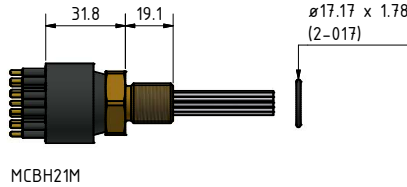
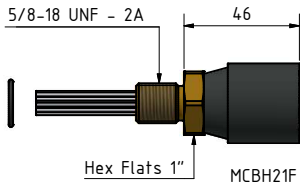
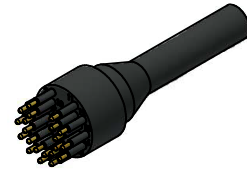
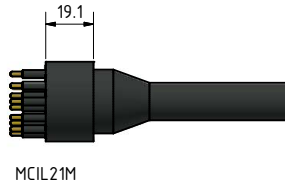
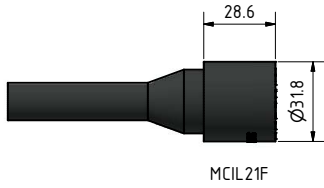
Connector body	Chloroprene rubber
Bulkhead body	Brass, stainless steel, titanium, anodised aluminium or PEEK
Contacts	Female sockets in gold plated brass UNS - C36000 Male contacts in gold plated beryllium copper
O-rings	Nitrile
Locking sleeves	POM or stainless steel
Snap rings	Stainless steel AISI 302
Inline cable (2 ft, 60 cm)	20 AWG, 0.52 mm ² PUR
Bulkhead and PBOF leads (1 ft, 30 cm)	20 AWG, 0.52 mm ² white tagged PTFE
OM leads (3", 7 cm)	20 AWG, 0.52 mm ² white tagged PTFE

Face view (male)



Inline cable colour code

1 Grey	7 White/black	13 White/green	19 White/orange/black
2 Purple	8 White	14 White/blue	20 White/yellow/black
3 Blue	9 White/brown	15 White/purple	21 White/green/black
4 Green	10 White/red	16 White/grey	
5 Yellow	11 White/orange	17 White/brown/black	
6 Orange	12 White/yellow	18 White/red/black	



Drawing information

Dimensions in mm (1 mm = 0.03937 inches)
Threads in inches (1 inch = 25.4 mm)

Cable and wire lead information

Synthetic rubber cables – see page 141. Wire leads – see page 142.
For recommended PUR cables, please refer to the Polyurethane cables section.