

SubConn® additional accessories



The connectors are available with a full range of accessories, all held in stock with MacArtney

Comprehensive range of accessories and handling products to support and enhance the performance of SubConn® connectors

The accessories range includes locking sleeves in POM or ABS in a range of colours and stainless steel AISI 316.

You will also find a variety of blanking plugs, straps, snap rings and O-rings.

Nuts and washers can be supplied in stainless steel AISI 316 or brass UNS-C 36000, covering the complete series of SubConn® connectors.

To support the performance and extend the lifespan of SubConn® connectors, we carry recommended handling products such as isopropyl, MOLYKOTE® 44 and LOCTITE® for metallic or non-metallic connectors.

Latest revision
available online



Locking sleeves



Locking sleeves are available in a range of colours in POM or ABS, and in stainless steel AISI 316

DLSA-M/F



Red



Blue



Black



Green



Yellow



White

SSLSA-M/F



AISI 316

DLSB-M/F



Red



Blue



Black



Green

SSLSB-M/F



AISI 316

DLSC-M/F



Red



Blue

SSLSC-M/F



AISI 316

MCDLS-M/F



Red



Blue



Black



Green



Orange

MCSSLS-M/F



AISI 316

LS2000



Black

LS2400



Black

DLSM1-M/F



Black

MCDWLS



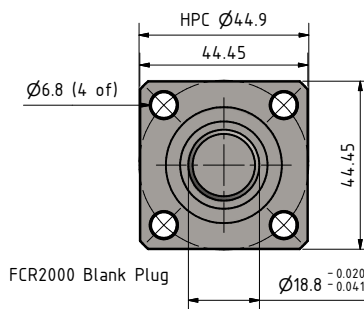
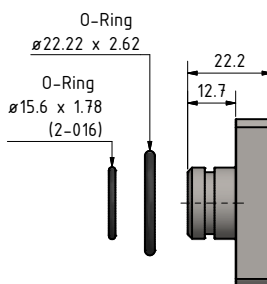
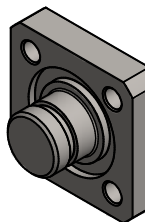
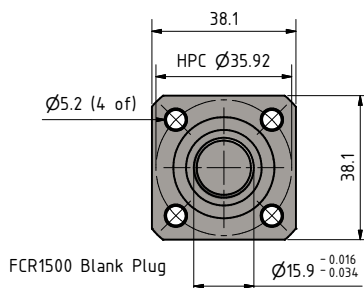
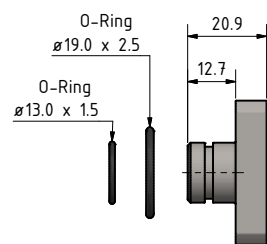
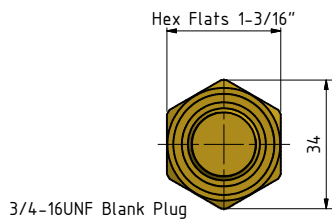
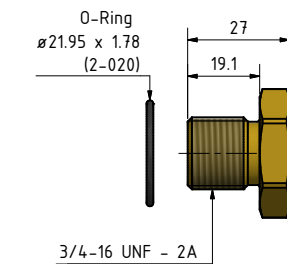
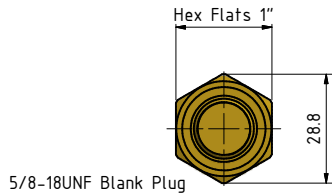
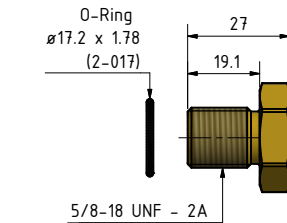
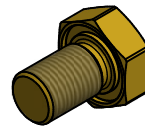
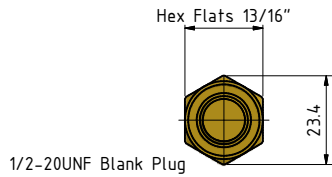
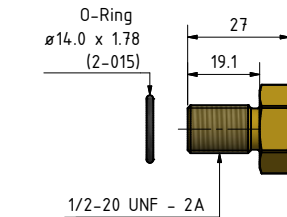
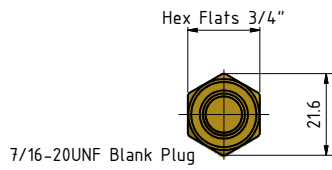
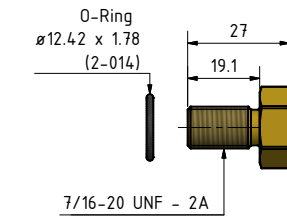
MCSSDWLS



AISI 316

Blank plugs

Blank plugs are available in stainless steel AISI 316 or brass UNS-C36000 (other materials on request).

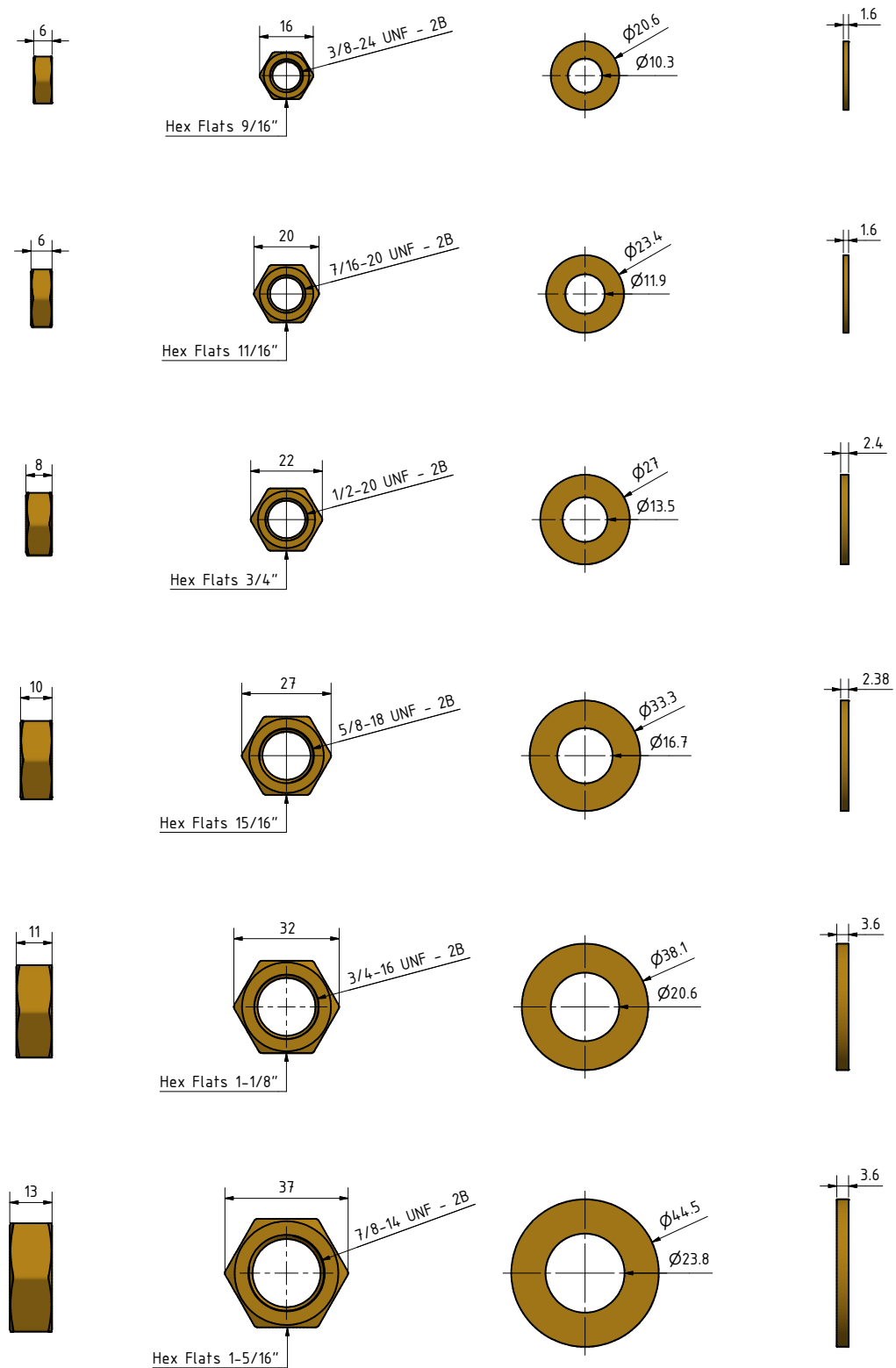


Drawing information

Dimensions in mm (1 mm = 0.03937 inches)
Threads in inches (1 inch = 25.4 mm)

Nuts and washers

Nuts and washers can be supplied in stainless steel AISI 316 or brass UNS-C36000.



Drawing information

Dimensions in mm (1 mm = 0.03937 inches)
Threads in inches (1 inch = 25.4 mm)

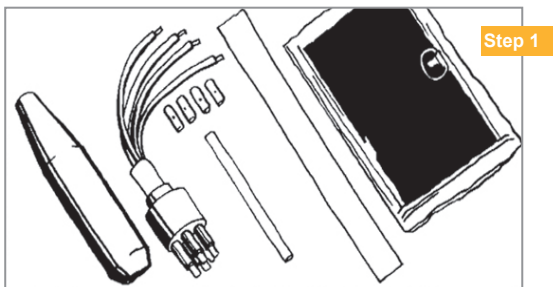
FSK kit

Assembly instructions

The SubConn® OM series of connectors is supplied as a quick, reliable, and watertight solution for customers who require installation of standard SubConn® connectors on a non-standard cable or for quick, efficient field re-termination. The OM connector series mates with the compatible standard SubConn® series.

The connectors are produced with a tube brass body and 7 cm pigtail wires, which are spliced and moulded to the cable using a pre-formed "Boot" and pre-packed ambient temperature curing polyurethane.

The end result is a professional, rugged and watertight termination rated to full ocean depth. The connector is available in 2 to 16-contact male and female configurations, together with all the specials with the same shell size.

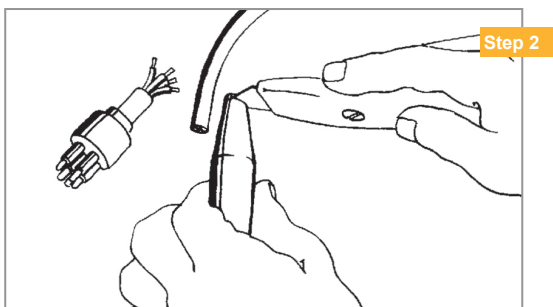


Operational steps

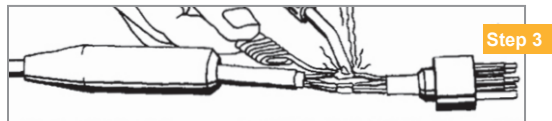
1. Ensure that the correct materials are available for the planned job

- The correct OM connector, e.g. OM6F (not included in the FSK)
- The correct "Boot" (e.g. OMBB)
- Adequate moulding material (e.g. 2131, 90 g from 3M)
- Primers (Scotchcast™ Resin Primer 5136 from 3M)*
- Acetone for degreasing*
- Crimp sleeve and heating gun
- Soldering iron, solder, side cutters, cable stripper and small paint brush

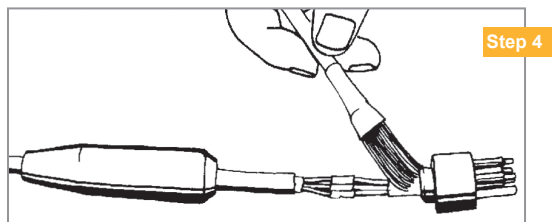
* Please notice that primers and acetone are not part of the delivery. You will need to purchase these items individually to be sent as dangerous goods or purchase them locally.



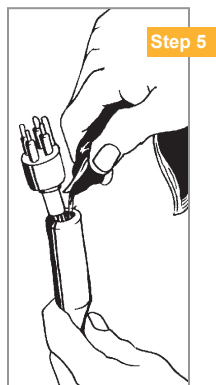
2. Cut pigtail wires on OM connector to approx. 2 cm from the brass body. Trim back tapered cable entry on boot until the cable is a snug fit (approx. 0.5 mm less than cable diameter).



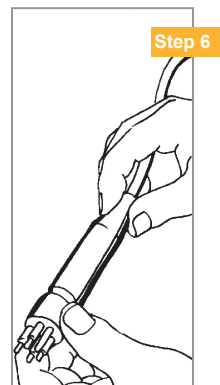
3. Prepare cable to be connected by stripping 3 cm off the jacket. Solder or crimp cable wires to pigtail on OM connector and insulate using crimp sleeve, heat shrink, or electrical tape. The spliced conductors should be twisted together in the same direction as laid in the cable.



4. Degrease all moulding surfaces including cable jacket, conductors and brass body with acetone and allow to dry. Apply appropriate primer to brass body conductors, cable jacket and chloroprene rubber base of connector with a small brush and allow to dry (approx. 30 min. at 20°C). Do not touch primed surfaces after primer application.



5. Select the appropriate polyurethane twin pack (e.g. 2131, 90 g for a single moulding) and mix the PUR material according to supplier instruction. Cut off the corner of the pack and squeeze the material into the boot as shown.



6. When the boot is full of material, slide it up the cable until it fits tightly over the neoprene protrusion on the back of the connector. Push the cable into the boot about 2 mm and wipe off any excess visible polyurethane material. The connector will be ready for use after 12 hours at 20°C.

Safe handling procedures

To comply with recommended health and safety procedures; ensure the use of barrier creams, gloves and a clean, well-ventilated work area.