

TrustLink™ Power/Signal



Versatile power and signal connectors for challenging marine and subsea environments

TrustLink Power/Signal connectors ensure transmission of electrical power and signals in subsea systems, where reliability is paramount. The series is available in three standardised shell sizes (A, B, and C) to fit a wide range of equipment and installation footprints.

The connector's housing and locking sleeve are available in standard materials such as stainless steel, aluminium bronze, and titanium. Titanium ensures enhanced corrosion resistance and extended service life. The modular design supports a wide range of high-density contact configurations. Interchangeable male/female inserts help ensure a safe configuration for each installation, while the anti-seizing surface finish ensures dependable handling in demanding conditions.

TrustLink Power/Signal connectors are rated for pressures up to 600 bar (8,700 psi) and currents of up to 25 A. They are tested to EN 60664-1 and EN 50393-Table 5 standards.

All connectors are terminated by MacArtney and supported globally.

Latest revision
available online



Applications

- ROVs, AUVs, and trenchers
- Naval systems and equipment
- Oceanographic instruments and subsea nodes
- Seismic and survey systems
- Underwater cameras, video, and lighting
- Offshore oil & gas and renewable energy systems
- Power supply for underwater pumps
- Harsh environment monitoring and telemetry

Options

- Booted versions
- Pressure Balanced, Oil-Filled (PBOF)
- Back pressure rated to 600 bar
- Custom materials on request

Specifications - Power/Signal - size A

Electrical

	4 contacts	8 contacts	12 contacts
Contact size:	14 AWG	18 AWG	20 AWG
Contact size:	2.1 mm ²	0.8 mm ²	0.5 mm ²
Voltage rating:	600 VAC/VDC	600 VAC/VDC	250 VAC/VDC
Dielectric withstand:	4,000 VAC	4,000 VAC	2,500 VAC
Current rating up to 4 contacts loaded:	25 A	12 A	12 A
Current rating up to 10 contacts loaded:		8 A	7 A
Current rating all contacts loaded:	25 A	8 A	7 A

Materials

Housing*:	Diamond polished AISI 316 Diamond polished Titanium G II
Locking sleeves*:	Diamond polished Nickel Aluminium Bronze C63000 Diamond polished AISI 316 Diamond polished Titanium G II
Pressure cap*:	Diamond polished AISI 316 Diamond polished Titanium G II
Dust cap:	POM
Electrical insert:	Glass reinforced high performance thermoplastic
O-ring:	FPM-75

Environmental

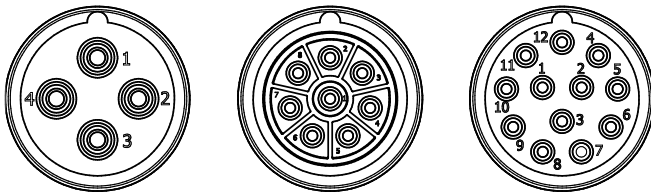
Qualified pressure tested:	Mated 720 bar/10,400 psi
Depth rating:	Mated 600 bar/8,700 psi
Temperature rating:	
Water:	-4 to 70°C/25 to 158°F
Air:	-25 to 70°C/13 to 158°F
Storage:	-25 to 70°C/13 to 158°F

Standards

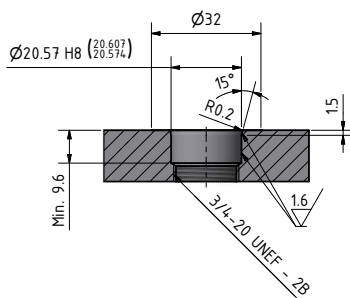
Creepage distances and clearance:	EN 60664-1, tables F2 and F4
Electrical low voltage tests:	EN 50393, table 5

*Other materials on request

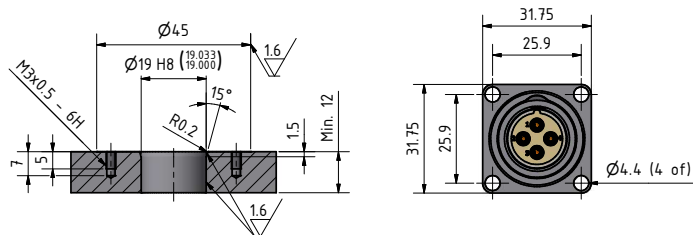
Face view (male)



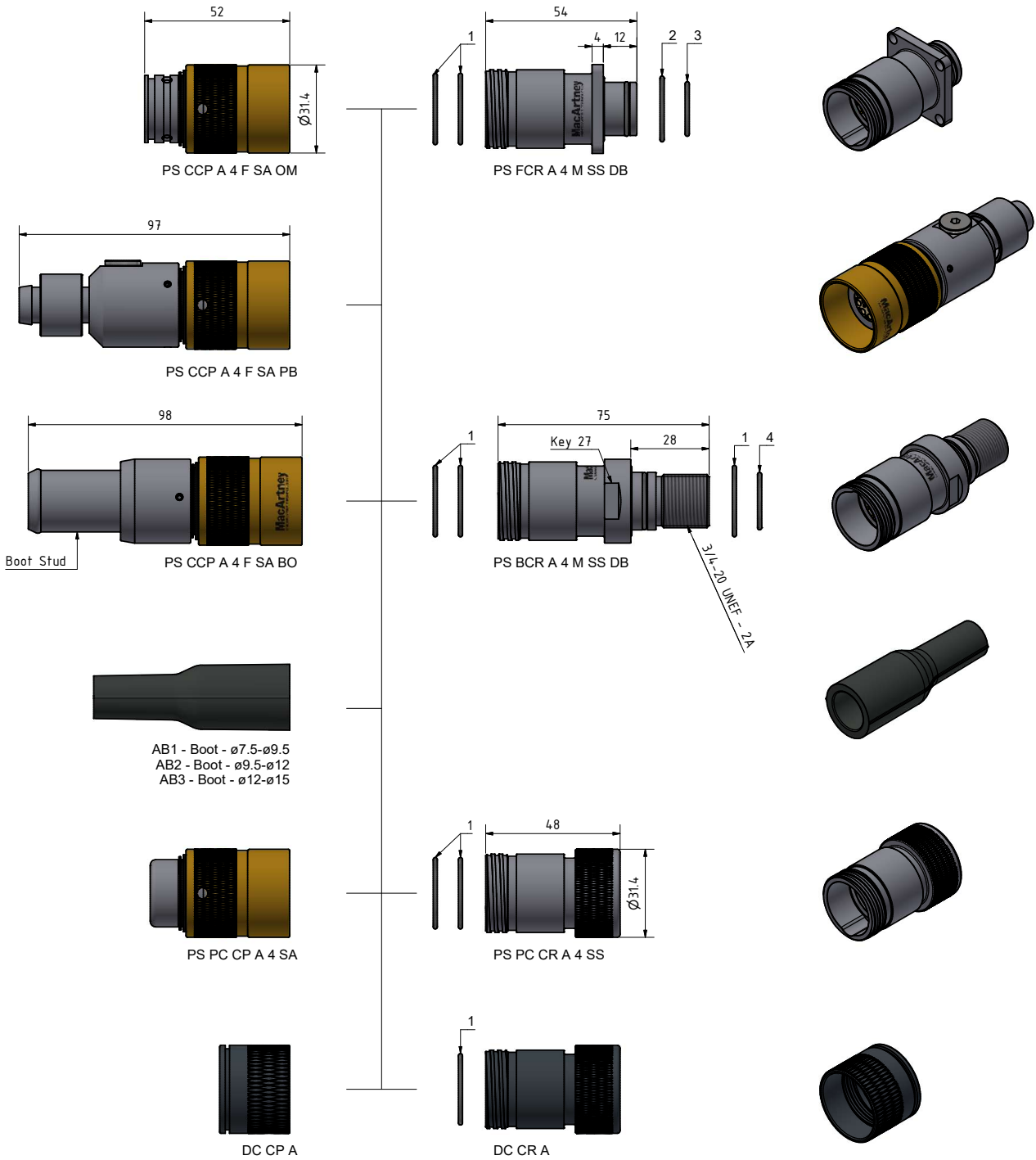
Mounting hole for BCR SA



Mounting hole for FCR SA



Terminated by MacArtney only.



O-rings:

1. $\varnothing 22.5 \times 1.5$ FPM-75
2. $\varnothing 20.5 \times 1.5$ FPM-75
3. $\varnothing 16.5 \times 1.5$ FPM-75
4. $\varnothing 17.5 \times 1.5$ FPM-75

All measurements in millimetres (mm)

For technical information
and instructions
Scan QR code



Specifications - Power/Signal - size B

Electrical

	16 contacts		19 contacts
Contact size:	2 x 16 AWG	14 x 20 AWG	20 AWG
Contact size:	1.3 mm ²	0.5 mm ²	0.5 mm ²
Voltage rating:	600 VAC/VDC	250 VAC/VDC	250 VAC/VDC
Dielectric withstand:	4,000 VAC	2,500 VAC	2,500 VAC
Current rating up to 4 contacts loaded:	20 A	12 A	12 A
Current rating up to 10 contacts loaded:	11 A	7 A	7 A
Current rating all contacts loaded:	9 A	6 A	6 A

Materials

Housing*:	Diamond polished AISI 316 Diamond polished Titanium G II
Locking sleeves*:	Diamond polished Nickel Aluminium Bronze C63000 Diamond polished AISI 316 Diamond polished Titanium G II
Pressure cap*:	Diamond polished AISI 316 Diamond polished Titanium G II
Dust cap:	POM
Electrical insert:	Glass reinforced high performance thermoplastic
O-ring:	FPM-75

Environmental

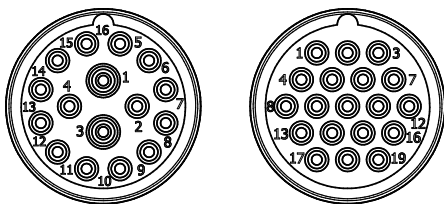
Qualified pressure tested:	Mated 720 bar/10,400 psi
Depth rating:	Mated 600 bar/8,700 psi
Temperature rating:	
Water:	-4 to 70°C/25 to 158°F
Air:	-25 to 70°C/13 to 158°F
Storage:	-25 to 70°C/13 to 158°F

Standards

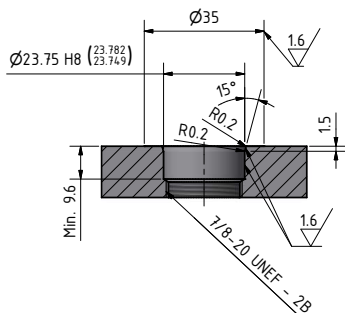
Creepage distances and clearance:	EN 60664-1, tables F2 and F4
Electrical low voltage tests:	EN 50393, table 5

*Other materials on request

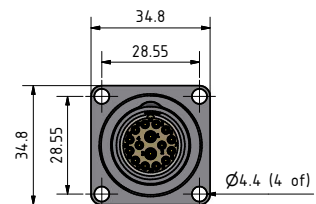
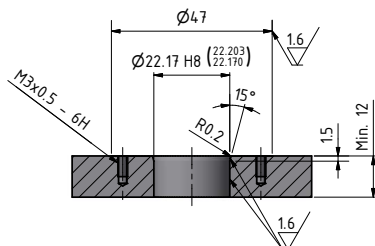
Face view (male)



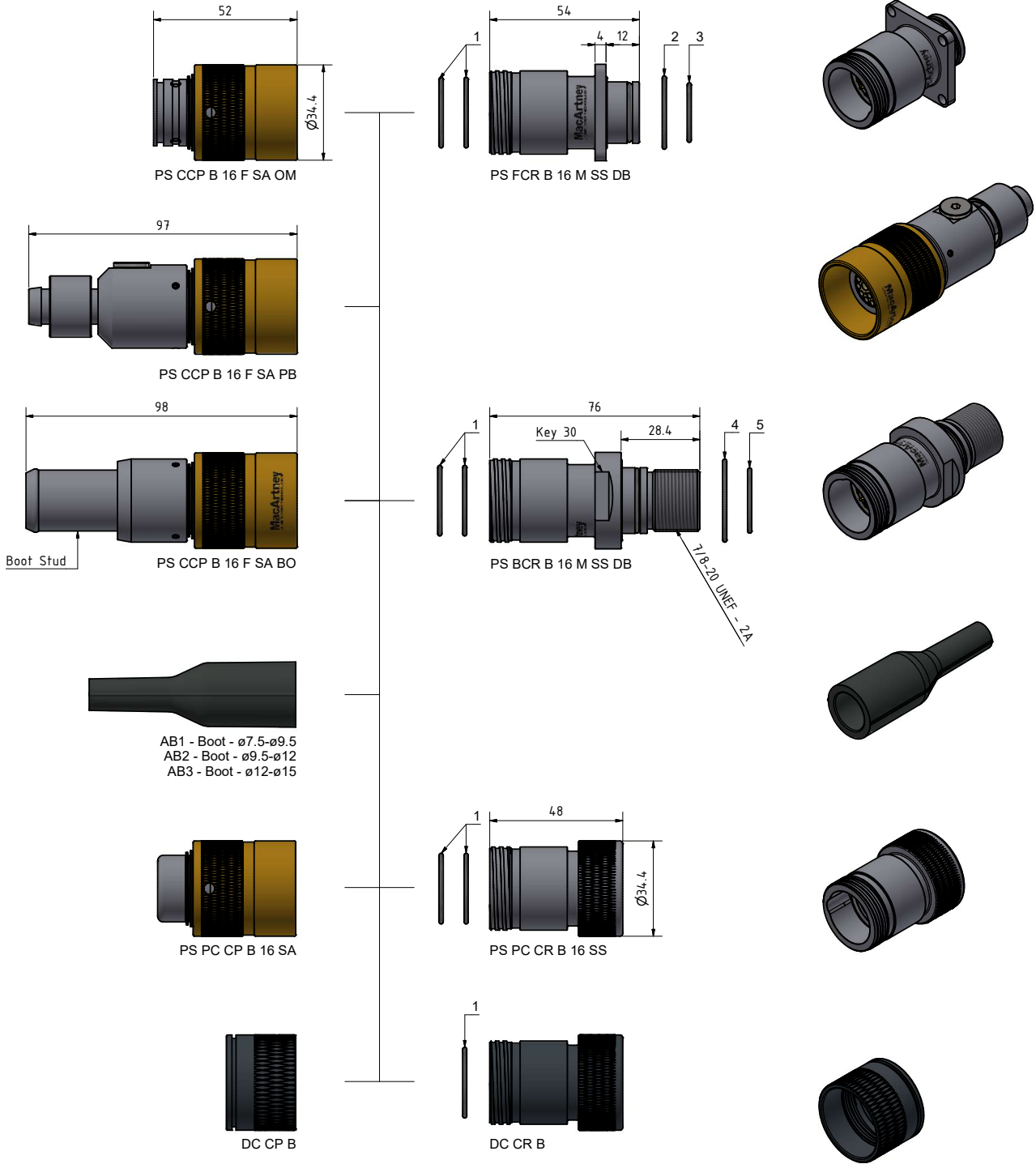
Mounting hole for BCR SB



Mounting hole for FCR SB



Terminated by MacArtney only.



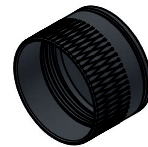
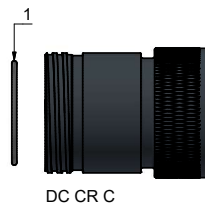
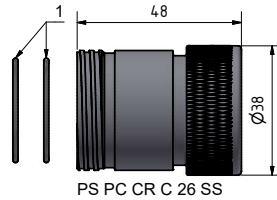
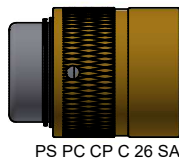
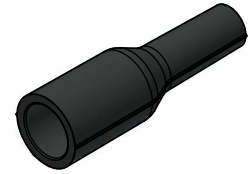
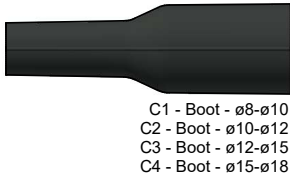
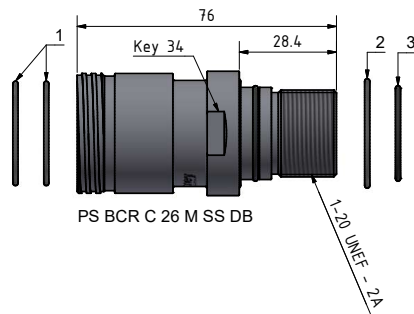
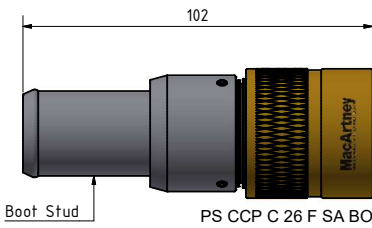
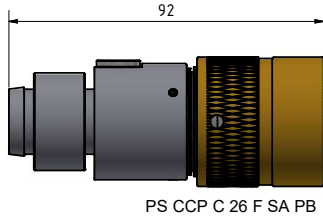
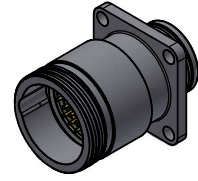
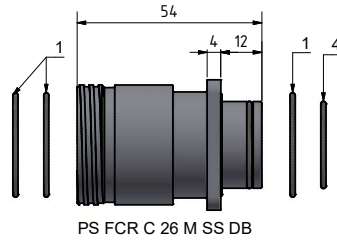
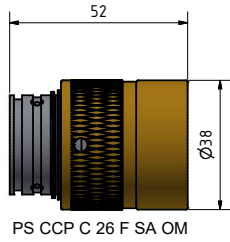
O-rings:

1. ø22.5 x 1.5 FPM-75
2. ø23.5 x 1.5 FPM-75
3. ø18.5 x 1.5 FPM-75
4. ø27.0 x 1.5 FPM-75
5. ø20.5 x 1.5 FPM-75

All measurements in millimetres (mm)

For technical information
and instructions
Scan QR code





O-rings:

1. ø27.5 x 1.5 FPM-75
2. ø29.0 x 1.5 FPM-75
3. ø24.5 x 1.5 FPM-75
4. ø22.5 x 1.5 FPM-75

Blind plug:

6. 3/16" SAE port (Thread 3/8"-24UNF)

All measurements in millimetres (mm)

For technical information
and instructions
Scan QR code



” *The modular design includes fully interchangeable male and female inserts, which are engineered and tested to IEC standards. The inserts are rated for up to 10,000 mating cycles, with FCR and BCR configurations qualified for use at pressures up to 600 bar.*



Part number list

TrustLink Power/Signal

PS CCP A 8 F SA BO AB2

	PS	CCP	A	8	F	SA	BO	AB2
Range	PS	Power/Signal						
Type	CCP	Cable Connector Plug						
	FCR	Flange Connector Receptacle						
	BCR	Bulkhead Connector Receptacle						
Shell size	A	A size						
	B	B size						
	C	C size						
Contacts	4, 8, 12	Number of contacts	A size					
	16, 19	Number of contacts	B size					
	26, 37	Number of contacts	C size					
Gender	F	Female						
	M	Male						
Material	SA	Body: Stainless Steel, Locking sleeve: Aluminium Bronze						
	SS	Stainless Steel (AISI 316)						
	TI	Titanium (Gr. 2)						
Sealing	DB	Dry Box	FCR and BCR					
	BP	Back Pressure	FCR and BCR					
	OM	Overmould	CCP					
	BO	Boot stud	CCP					
	PB	PBOF	CCP					
Boot size	AB1	Boot for cable ø7,5-ø9,5	A and B size					
	AB2	Boot for cable ø9,5-ø12	A and B size					
	AB3	Boot for cable ø12-15	A and B size					
	C1	Cable ø8-ø10	C size					
	C2	Cable ø10-ø12	C size					
	C3	Cable ø12-ø15	C size					
	C4	Cable ø15-ø18	C size					